


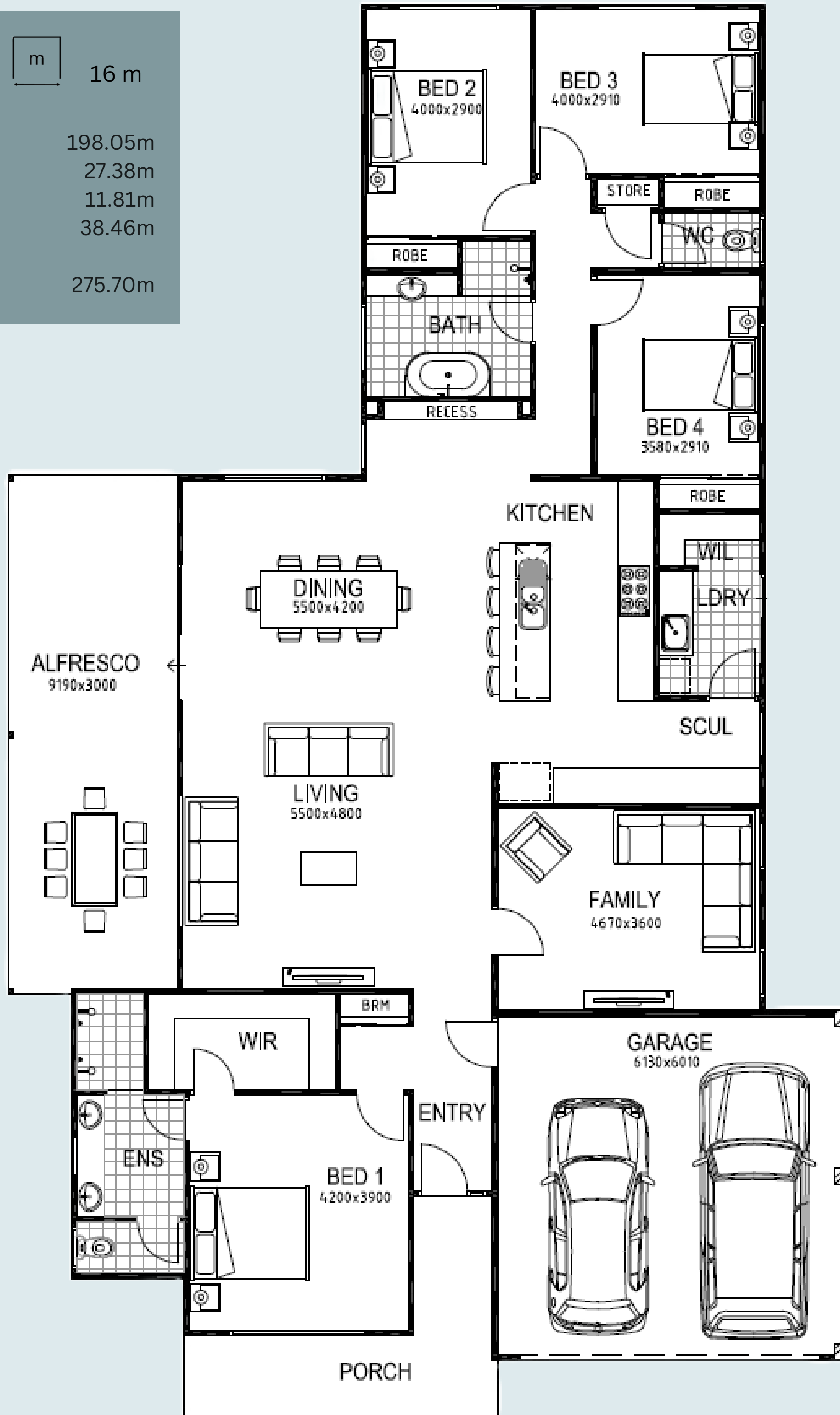


# THE PALM

 4	 2	 16 m
Ground Floor	198.05m	
Alfresco	27.38m	
Porch	11.81m	
Garage	38.46m	
<b>TOTAL</b>	<b>275.70m</b>	



DESIGN + CONSTRUCT | MODERN COASTAL HOME

**INDIANIC**  
HOMES

E homes@indianic.co

R BC 104254

T 0424 968 900

www.indianic.co